

---

**After Hours...**  
**Land Record Research**

For the past two years, Russ Johnston has been volunteering with the Connecticut Forest & Park Association doing land record research of properties containing segments of various "Blue Blazed" hiking trails. Russ approaches this as a "quest" to ferret out the desired information and actually finds the work relaxing and fun. While all properties involve finding the relevant deed(s), Russ



is particularly enthused when parcel mapping is also discovered. Previous research has focused on the eastern and central portions of the State, but he is looking forward to expanding "west of the river" in 2018.

---

**Year End Reflections...**

As this year draws to a close, we wish to once again thank you, our clients, for providing us with the opportunity to work with and for you. While the year has had its' challenges, we can safely say that it was better than the year before and now 2018 looks even brighter.

We look forward to new opportunities and new challenges in the year ahead.

**See you in 2018!**

---

387 North Main Street  
Manchester, CT 06042  
Phone: (860) 643-2520  
Facsimile: (860) 649-8806  
e-mail: [info@meehangoodin.com](mailto:info@meehangoodin.com)  
Internet: [www.meehangoodin.com](http://www.meehangoodin.com)



**Meehan & Goodin**  
**Engineers - Surveyors, P.C.**

---

**Meehan & Goodin**  
**Engineers - Surveyors, P.C.**  
**Winter 2017 Newsletter**

---



Best wishes  
for you and your loved  
ones from all of us at  
Meehan & Goodin

*Scott Hallatt*  
*Danny*  
*Janice A. Grass*  
*Ro*  
*Richard Meehan*  
*Kevin Nelson*  
*Dizzie Touse*  
*E. Paul J. Lee*

---

## How Can We Help You Today?

- Site Planning
- Civil Engineering
- Land Surveying
- Permitting

- ◆ Richard Meehan, PLS
- ◆ E. Russell Johnston III, PE
- ◆ Robert E. Dahn, PLS

Call us to see how we can assist you on your next project. (860) 643-2520

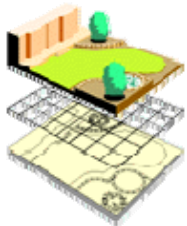


## On The Web...

To learn more about our firm, visit us at our Website

[www.meehangoodin.com](http://www.meehangoodin.com)

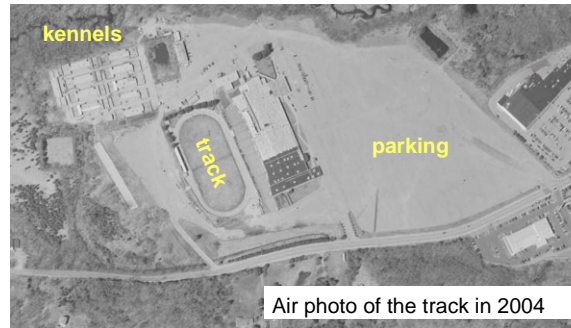
## Land Use Development Seminars...



We offer free seminars on land use evaluation, development and planning, as well as on the latest survey standards and codes.

Call Richard Meehan for more information about how to set up a seminar for your group at your location.

## Topographic Survey... Former Plainfield Greyhound Park



Air photo of the track in 2004

Meehan & Goodin has prepared topographic and boundary surveys for the site of the former Plainfield Greyhound Park. Opening in 1976, the Dog Track was in operation until closing in 2005 with the buildings and kennels being demolished thereafter. Winstanley Enterprises is exploring several options for large scale redevelopment of the long vacant parcel.

## On The Boards... Adaptive Reuse



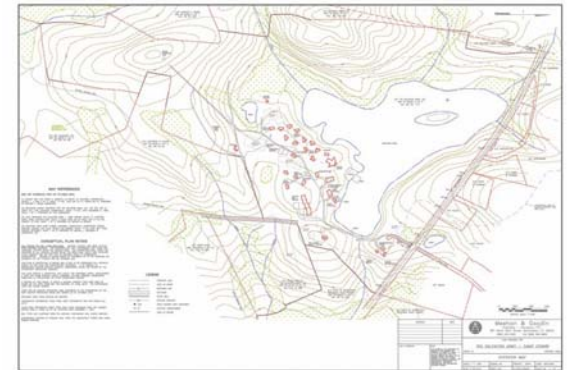
A vacant former medical office building is in the process of being reinvented as a new car dealership in East Hartford. Meehan & Goodin provided the surveys, engineering design and support during the permit process. In addition to normal customer parking, a significant area for inventory car parking needed to be provided.

## Campus Wide Mapping... University of Saint Joseph



Continuing our long relationship with the University of Saint Joseph, Meehan & Goodin prepared a campus wide compilation plan consisting of a mosaic of our numerous previous surveys throughout the campus.

## Mapping and Analysis... Salvation Army - Camp Connri



Meehan & Goodin recently completed the mapping and preliminary land use analysis of the Salvation Army's Camp CONNRI property in Ashford. The plans will be used to guide and assist the Army's long-range development and facilities upgrade program.